






# Roxtec C LH Transit

Light weight transit for bolting to the structure.

The Roxtec C LH is a compact lightweight yet very strong sealing solution for multi-cable and pipe transit available five different sizes. The transit frame is produced in aluminum and is attached to the structure by bolting. The sealing modules are adaptable to cables and pipes of different sizes, and can be used to build in spare capacity in the transit. Providing ingress and fire protection as well as vibration-proof cable retention, it is ideal for floor and wall applications in mobility sectors such as rolling stock.



-  Light-weight
-  Area efficient
-  Provides built-in spare capacity

## Product characteristics



Fire rated



IP/UL NEMA

## Structure of installation



Cabinets & enclosures



Metal

## Mounting type




Bolting

## Ratings & certificates

### Fire

-  E/EI rating according to EN 45545 E30

### Tightness

-  IP 66

## Frame dimensions

### in/lbs

The frame variants below are a limited selection. For the full range of frames and configurations, please visit [roxtec.com](https://www.roxtec.com).

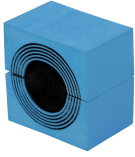
Product	Frame openings	Packing space	External dimensions WxHxD	Aperture dimensions w x h	Weight	Art. no
C LH 3x1 ALU	1	2.362 x 4.724	4.732 x 8.602 x 1.181	2.992(+0.039/-0.039) x 6.87(+0.039/-0.039)	1.3	234431
C LH 4x1 ALU	1	4.724 x 4.724	7.094 x 8.602 x 1.181	5.354(+0.039/-0.039) x 6.87(+0.039/-0.039)	1.1	234434
C LH 5x1 ALU	1	2.362 x 7.087	4.732 x 10.886 x 1.181	2.992(+0.039/-0.039) x 9.154(+0.039/-0.039)	1.1	234432
C LH 6x1 ALU	1	4.724 x 7.087	7.094 x 10.886 x 1.181	5.354(+0.039/-0.039) x 9.154(+0.039/-0.039)	1.3	234435
C LH 7x1 ALU	1	2.362 x 9.449	4.732 x 13.248 x 1.181	2.992(+0.039/-0.039) x 11.516(+0.039/-0.039)	1.3	234433



# Sealing components

## Sealing components

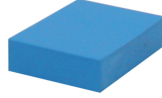
## Accessories



CM module with Multidiameter™



C Stayplate



CM solid compensation module



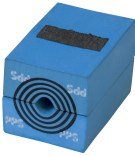
Lubricant Blue



C Wedge & C Wedgekit



Holder tools



CM PPS module with Multidiameter™

For detailed information, please visit [roxtec.com](https://www.roxtec.com).

The product information provided by Roxtec does not release the purchaser of the Roxtec system, or part thereof, from the obligation to independently determine the suitability of the products for the intended process, installation and/or use.

Roxtec gives no guarantee for the Roxtec system or any part thereof and assumes no liability for any loss or damage whatsoever, whether direct, indirect, consequential, loss of profit or otherwise, occurred or caused by the Roxtec systems or installations containing components not manufactured by an authorized manufacturer and/or occurred or caused by the use of the Roxtec system in a manner or for an application other than for which the Roxtec system was designed or intended.

Roxtec expressly excludes any implied warranties of merchantability and fitness for a particular purpose and all other express or implied representations and warranties provided by statute or common law. User determines suitability of the Roxtec system for intended use and assumes all risk and liability in connection therewith. In no event shall Roxtec be liable for indirect, consequential, punitive, special, exemplary or incidental damages or losses.

The Roxtec products are offered and sold in accordance with the conditions of the Roxtec General Terms of Sales. The latest version of the Roxtec General Terms of Sales can be downloaded from <https://www.roxtec.com/en/about-us/about-roxtec/general-terms-of-sales/>

We reserve the right to make changes to the product and technical information without further notice. Any errors in print or entry are no claims for indemnity. The content of this publication is the property of Roxtec International AB and is protected by copyright.

This document was generated on: 2024-09-27